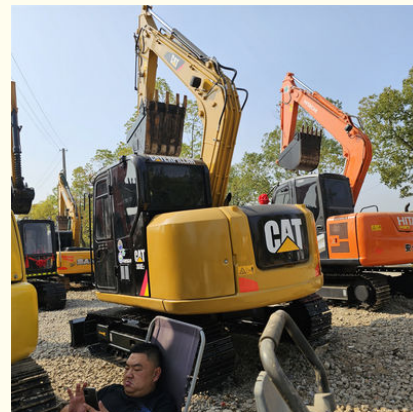




Mini Used Caterpillar Excavator 8ton CAT 308D 308D2 308E2

Basic Information

- Place of Origin: America
- Brand Name: Cartpilliar
- Model Number: 308
- Minimum Order Quantity: 1 Set
- Price: 14000-17000 USD per Set
- Packaging Details: 20Ft cab
- Delivery Time: 14-21 workdays
- Payment Terms: T/T
- Supply Ability: 20 set per month

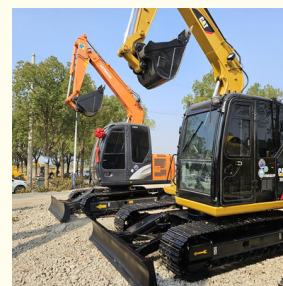
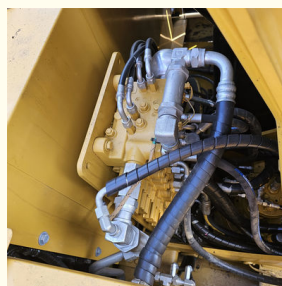
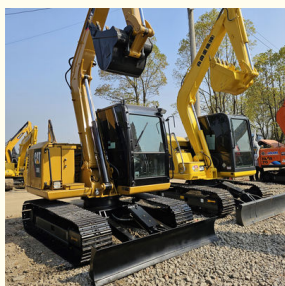


Product Specification

- Bucket Capacity: 0.22 M3
- Condition: Used
- Hours: 0-2000
- Location: China
- Manufacturer: CAT
- Max Digging Depth: 6 M
- Model: Used Excavator Machine
- Year: 2021
- Color: Original Paint
- Type: Hydraulic Excavator
- Highlight: Mini Used Caterpillar Excavator 8ton,
Mini Used caterpillar machines,
CAT 308D Mini Used Excavator



More Images



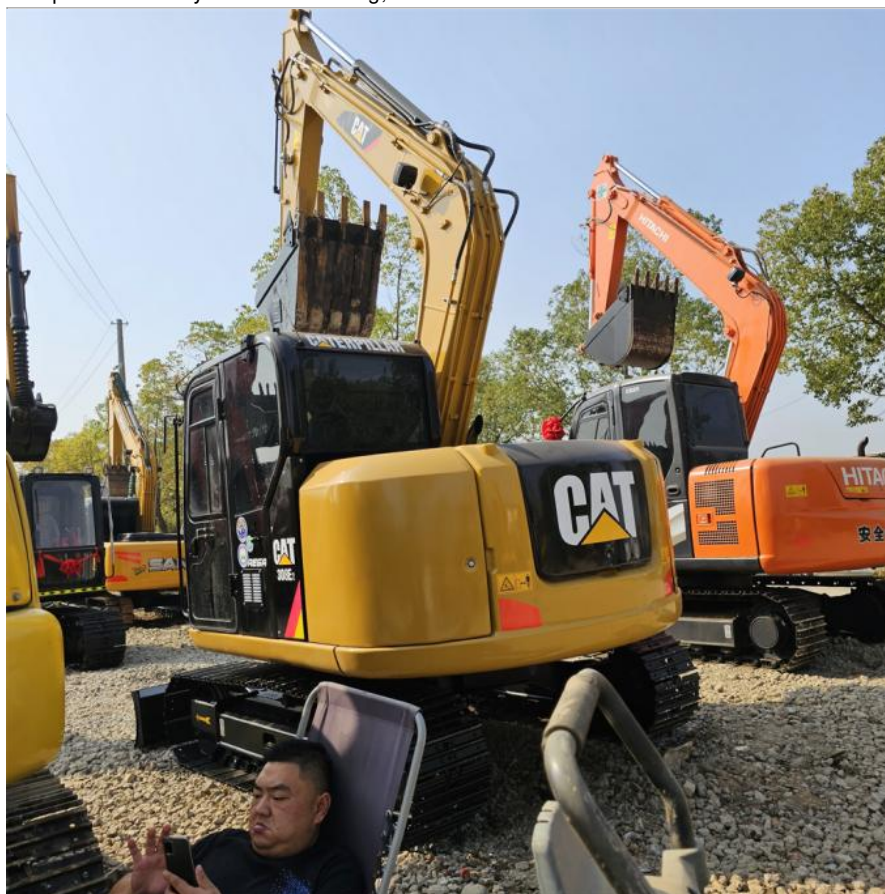
Product Description

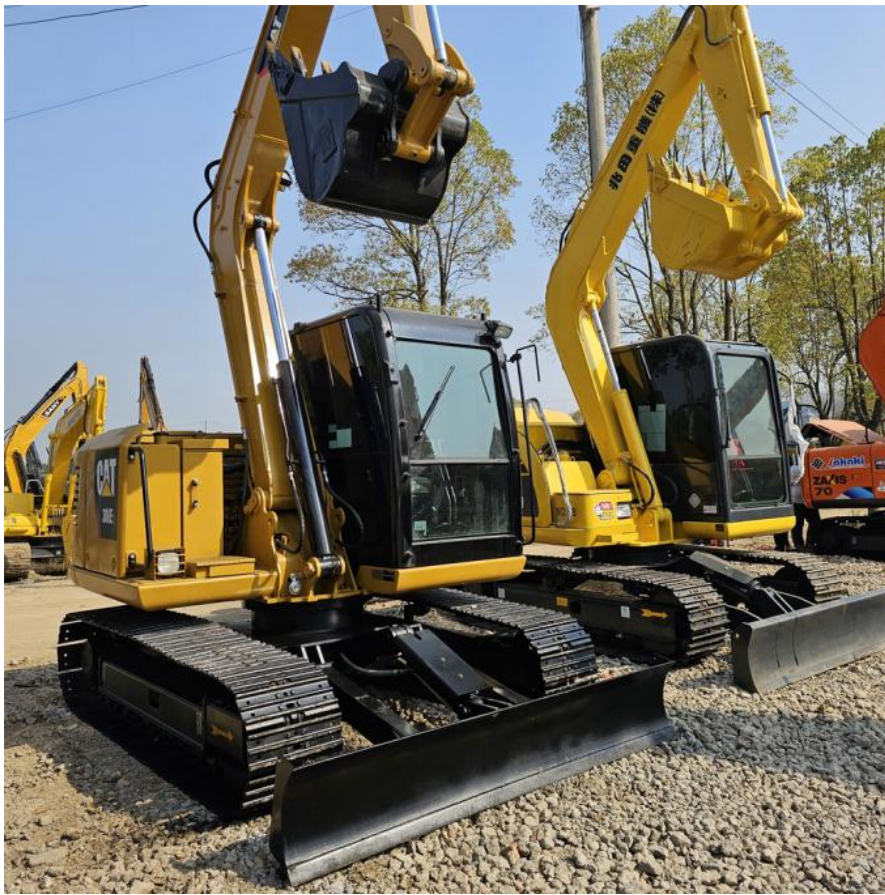
Hot Sale CAT 308D 308D2 308E2 8ton Mini Excavator 95% New In Good Condition For Sale

Production Detail

Strong working power and stability;

Complete accessory and no oil leaking;



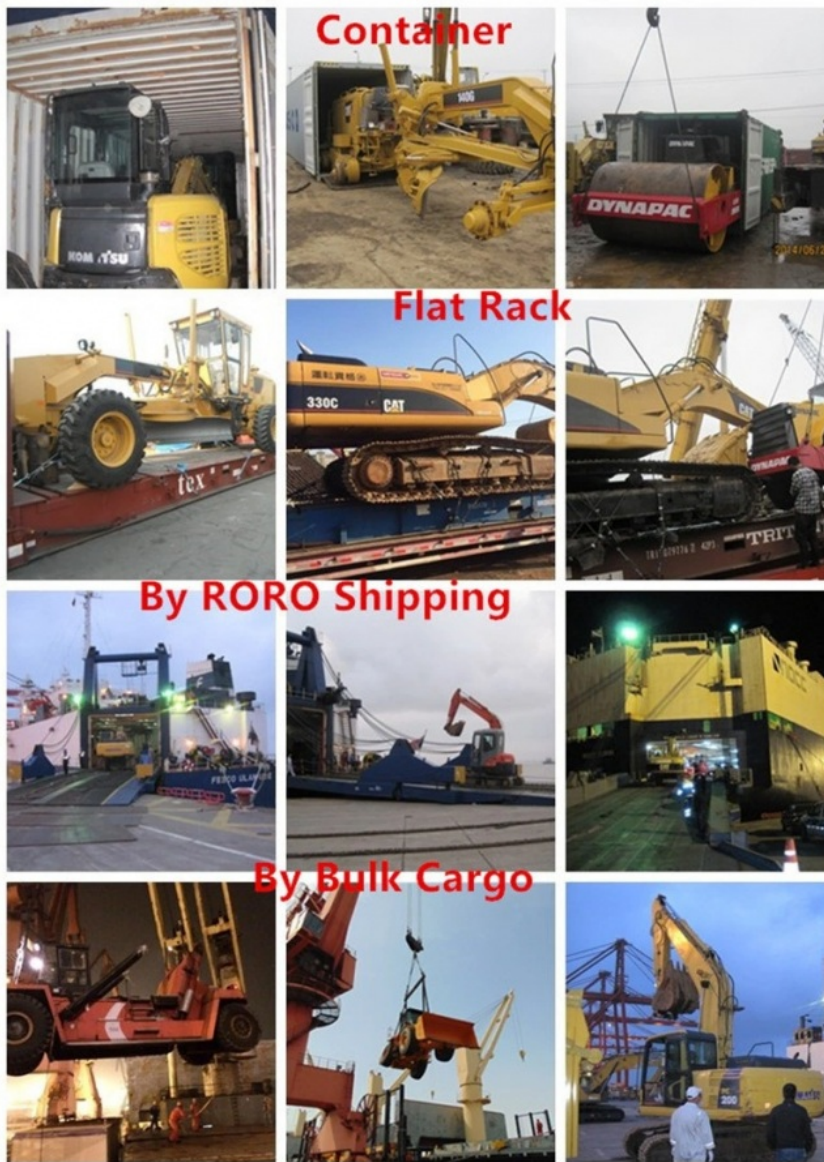




COMPANY PROFILE







Our Service:

10



1. Why can we thrust you?

Our company has focused on top quality used construction machines and parts for over 20 years in china. We started as a small construction machinery shop, but now we have become one of leading suppliers in the used construction machines in china

2. What's your payment term?

Our payment term is T/T,Cash,Western Union

3. Do you guarantee quality of machines you sold.

We have a very strict control on machine quality,all machines must be tested strictly to avoid any mechanical problem before sales.what's more we guarantee quality for one year after sales.

4. Can you ship worldwide?

We are very experienced in shipment of heavy machinery,so just tell us your destination port,we will take care of everything from door to door.

 **Hefei Gangniu Machinery Equipment Co., Ltd**



+86 19314055186



Flora@ahgnjx.com



usedexcavator-equipment.com

Room 707, Huifeng Plaza, North First Ring Road, Hefei City, Anhui Province