



Sdlg LG956L Used Excavator Equipment Used Wheel Front Loader

Basic Information

- Place of Origin: Shandong, China
- Brand Name: S D L G
- Model Number: LG956L
- Minimum Order Quantity: 1 Set
- Price: US \$17,850.00/ 1 Set US \$17,645.00 /2-4 Sets US \$16,520.00 /5-49 Sets US \$8,500.00/ 50+ Sets, MoneyGram
- Packaging Details: by Bulk Ship or Container
- Delivery Time: 5-8 work days
- Payment Terms: T/T
- Supply Ability: 50units/Month



Product Specification

- Model NO.: LG956L
- Walking Mode: Wheeled
- Year: 2018-2021
- Trademark: SDL G
- Condition: Used
- Rated Load: 6-9t
- Highlight: **Sdlg LG956L Used Excavator Equipment, Used Wheel Front Loader**

Product Description

Used Wheel Front Loader Sdlg LG956L Best Sale Model

Basic Info

Model NO.	LG956L	Load and Unload Mode	Front Discharge
Walking Mode	Wheeled	Type	Medium-sized Loader
Product Name	Used Cat Front Wheel Loaders	Model	LG956 LG958 LG936 LG933
Machine Weight	17000 - 18000 Kg	Engine	Weichai or Cat
Core Components	Engine, Motor, Pump, Gearbox, Pressure Vessel	Moving Type	Wheeled
		Year	2018-2021
		Working Hour	300hrs
After Warranty Service	Parts Supply Available	Warranty of Core Components	1 Year
		Supply Ability	50units/Month
Transport Package	by Bulk Ship or Container	Location	Shandong/Shanghai, China
		Specification	Different
Origin	Shandong, China	Trademark	SDL G
Production Capacity	1000 Sets Per Year	HS Code	842951

Product Description

Product Description

SDLG LG956 Front Loader Construction Equipment

Lg956l is a mine shovel loader suitable for loading and unloading hard materials. With long wheelbase and large digging force, it is customized for mines and heavy load conditions. It is widely used in construction sites, aggregate plants, mining, urban construction and other occasions.

Parameter configuration of SDLG LG956L Loader

Specifications

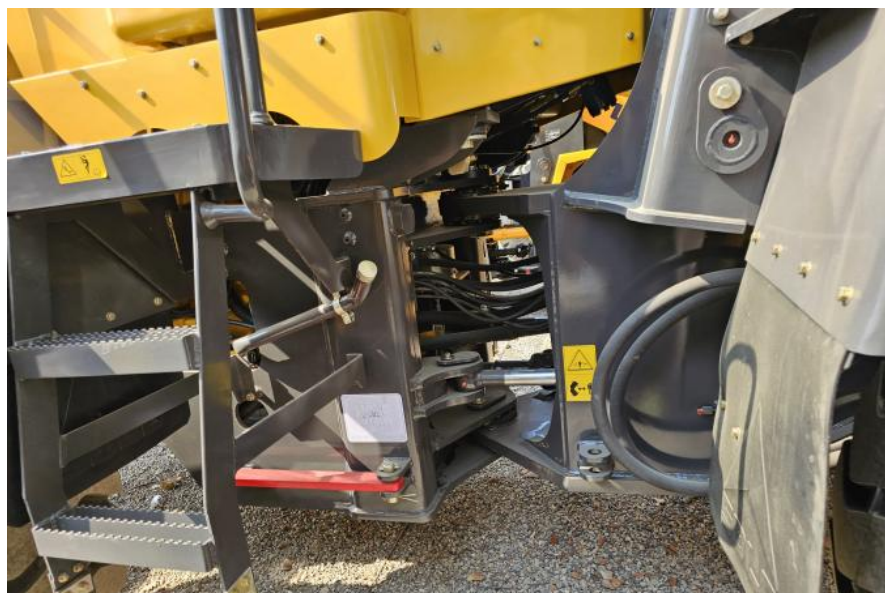
Power	Traditional power
Tonnage (ton)	5
Operating weight (kg)	17000-17250 kg
Bucket capacity (M3)	2.5~4.5 m3
Digging force (digging force) (KN)	180
Unloading height	3700

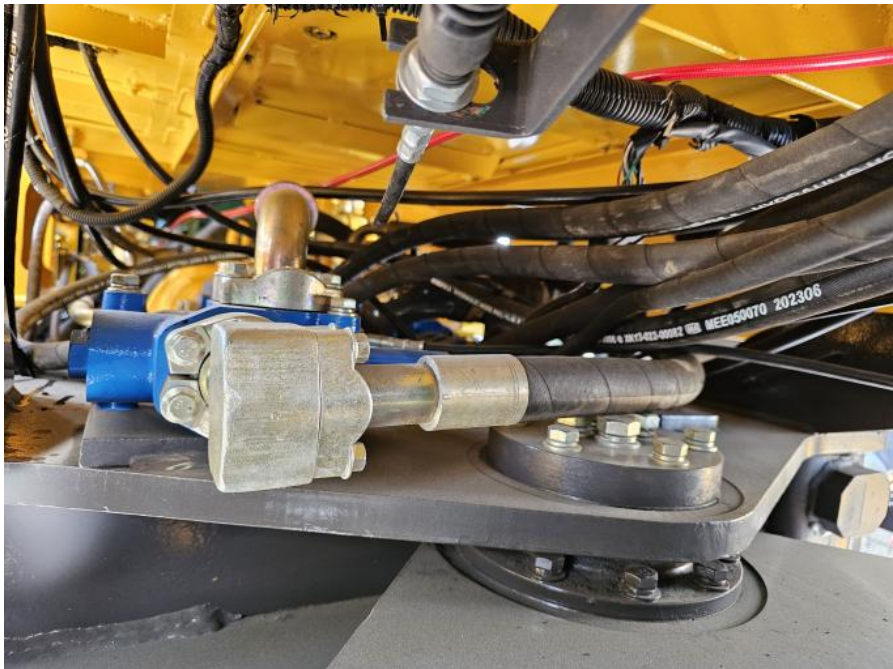
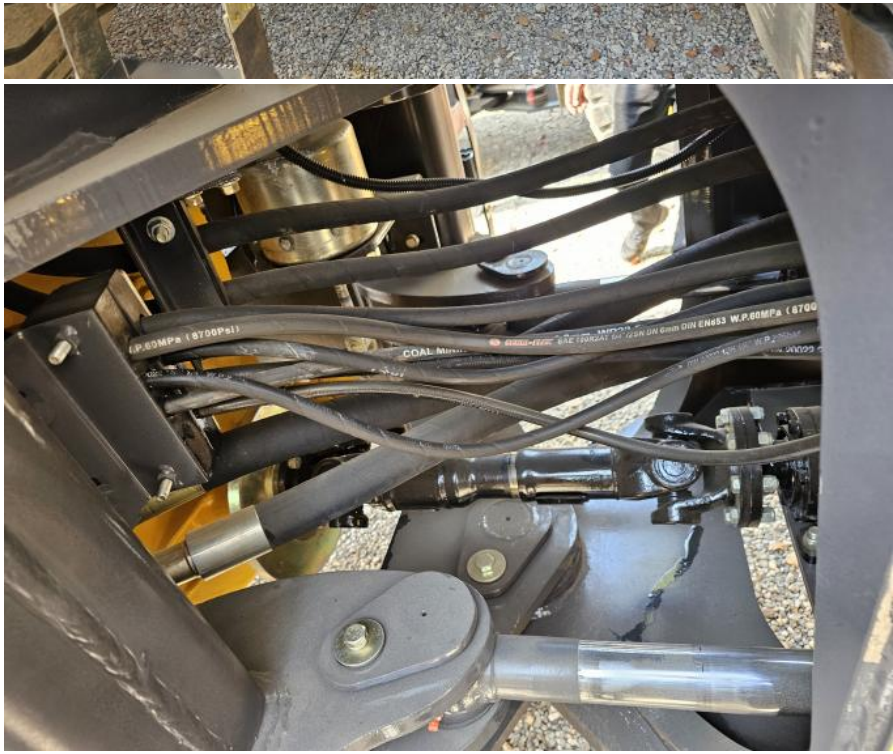
Dynamic System

Engine model	WD10G220E21/C61212G50
Rated power (kW / RPM)	162
Displacement (L)	9.72
Cylinder diameter × stroke (mm)	101×125

Body size

Total transport length (mm)	8430
Total transport width (mm)	3024
Total transport height (mm)	3024
Full height of cab (mm)	3020







FAQ

Q: How can you go to our yard?

A: We can arrange to pick you up at airport or train station or hotel.

Q: What is your advantage?

A: We are the largest professional used construction machinery company for 20years in China.
Engaged in used excavator, loader, bulldozer, grader, truck ,crane, forklift and road roller.
We have sufficient source of goods and guaranteed quality.
Based on this,we are able to provide our clients with good conditon machines at competitive price.
24 Hours Service

Q: How can we make a deal done?

A: The procedure mainly goes as the following steps:
Paying deposit if satisfied→booking cargo space→loading→getting the copy of B/L→paying the balance→getting the original B/L.


Q: What is the payment term?

A: For EXW/FOB term: 30% Advanced by T/T, balance before loading.
For CIF term: 30% Advanced by T/T,40% before loading and balance once upon receipt of copy of B/L.

 **Hefei Gangniu Machinery Equipment Co., Ltd**

 +86 19314055186

 Flora@ahgnjx.com

 usedexcavator-equipment.com

Room 707, Huifeng Plaza, North First Ring Road, Hefei City, Anhui Province