



## 20 Ton Used Hitachi Excavator ZX200 Second Hand Excavator Machine

Our Product Introduction

for more products please visit us on [usedexcavator-equipment.com](http://usedexcavator-equipment.com)

### Basic Information

- Place of Origin: Japan
- Brand Name: Hitachi
- Model Number: ZX200
- Minimum Order Quantity: 1 Set
- Price: 24000-29000 USD per Set
- Packaging Details: For sea transport, 20 size frame cabinet is recommended
- Delivery Time: 14-21 workdays
- Payment Terms: T/T
- Supply Ability: 20 set per month

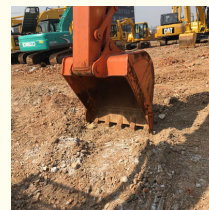
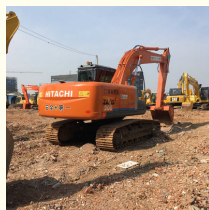


### Product Specification

- Bucket Capacity: 1.2 M3
- Condition: Second Hand Excavator
- Hours: 0-2000
- Location: China
- Manufacturer: Hitachi
- Model: Used Excavator Machine
- Year: 2019
- Color: Original Paint
- Type: Hydraulic Excavator
- Highlight: 20 Ton Used Hitachi Excavator, Used Hitachi Excavator ZX200, Hitachi Excavator ZX200



### More Images



### Product Description

20 Ton Used Excavator Hitachi ZX200 2019 Model For Sale Digger Use ZX210 ZX240 EX200 ZX200

#### Production Detail

Comfortable operating environment: Spacious cab and ergonomic control system provide an excellent working environment for operators.

Easy maintenance: Well-designed engine hood and convenient maintenance points make maintenance work simple and easy.

Shipping:

1. Bulk cargo ship
2. RO-RO ship
3. 40FR container

After you told me the port of discharge, i will give you the cheapest way

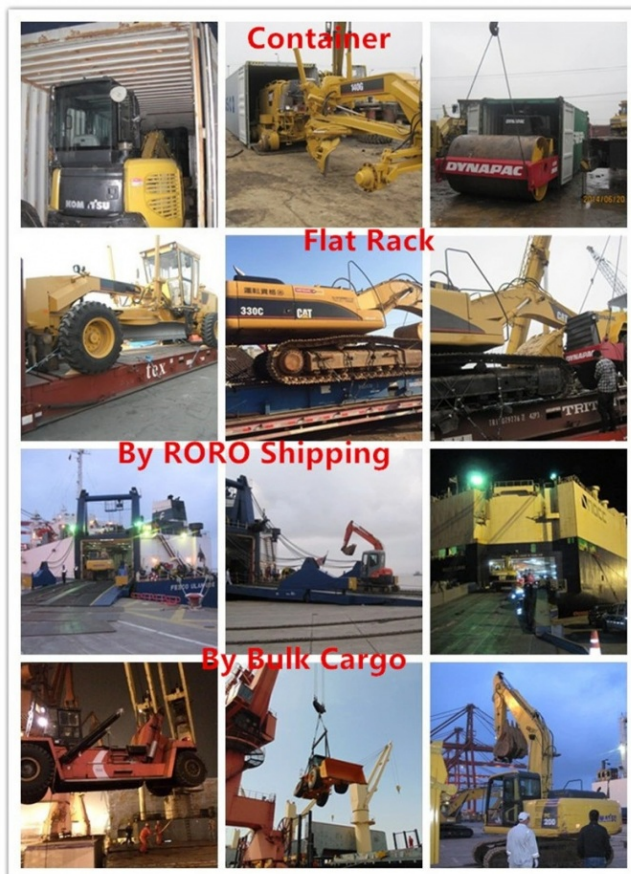
Our Product Introduction



For more products please visit us on [usedexcavator-equipment.com](http://usedexcavator-equipment.com)







## Our Service:



## FAQ:

### 1. How long is the warranty period of small excavators?

A: One year 12 Month or 1200 working hours.

### 2. What kind of small excavator certifications do you have?

A: CE, ISO9001, SGS, etc.

### 3. Is it convenient to visit your factory? How to go there?

A: Warmly welcome to visit our factory. It locates in Shanghai City and Hefei City, Anhui Province, China. By taking high-speed railway or plane are both ok. When you arrive, we will pick you up.

### 4. What are your advantages over others?

1. Over 20 years experience in the strong manufacturing capacity;
2. Own private brand, Shanding brand occupies 1st market share in China's domestic mini excavator market;
3. Strict quality control and service system. ISO9001, R & D and after-sales service team, 24/7 quick response;
4. Over 20 models ranging from 2000kg to 45ton, crawler/ wheel type .the engines have the Euro stage V, and EPA certification

### 5. MOQ?

minimum order quantity of 1 set, We can provide customized service Bigger order, price will be more favorable.

### 6. What is your terms of payment?

A: T/T, L/C at sight, Trade Assurance on Alibaba etc.

### 7. How long will the offer be valid?

Basically, our prices remain stable throughout the year. Mightly adjust the price due to 2 changes: exchange rate & raw material and labor cost.

### 8. How about the delivery time?

1. Conventional products: 5-7 working days after payment received.
  2. Customized products: 10-30 days according to detailed request.
- Any more infos, pls feel free to let us know at any time.

