



Heavy Duty Used Komatsu Excavator Machinery 45 Ton Excavator Hydraulic

Our Product Introduction

for more products please visit us on usedexcavator-equipment.com

Basic Information

- Place of Origin: Japan
- Brand Name: Komatsu
- Certification: CE/EPA/ISO9001
- Model Number: PC450
- Minimum Order Quantity: 1 Set
- Price: 40000-55000 USD per Set
- Packaging Details: For sea transport, 20 size frame cabinet is recommended
- Delivery Time: 14-21 workdays
- Payment Terms: T/T
- Supply Ability: 20 set per month

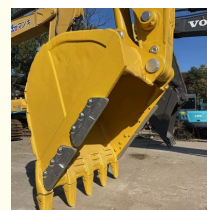
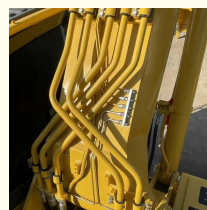
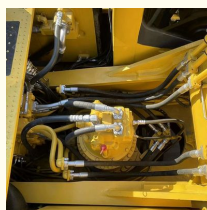
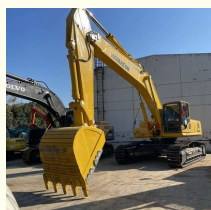


Product Specification

- Bucket Capacity: 1.8 M3
- Condition: Second Hand
- Hours: 0-2000
- Location: China
- Manufacturer: Komatsu
- Model: Used Excavator Machine
- Year: 2020
- Color: Original Paint
- Type: Hydraulic Excavator
- Highlight: Heavy Duty Used Komatsu Excavator, Used Komatsu Excavator Machinery, 45 Ton Excavator Hydraulic



More Images



Product Description

Production Detail

45 Ton Used Excavator Komatsu PC450 Heavy Duty Machinery Hydraulic Excavator Mine Use

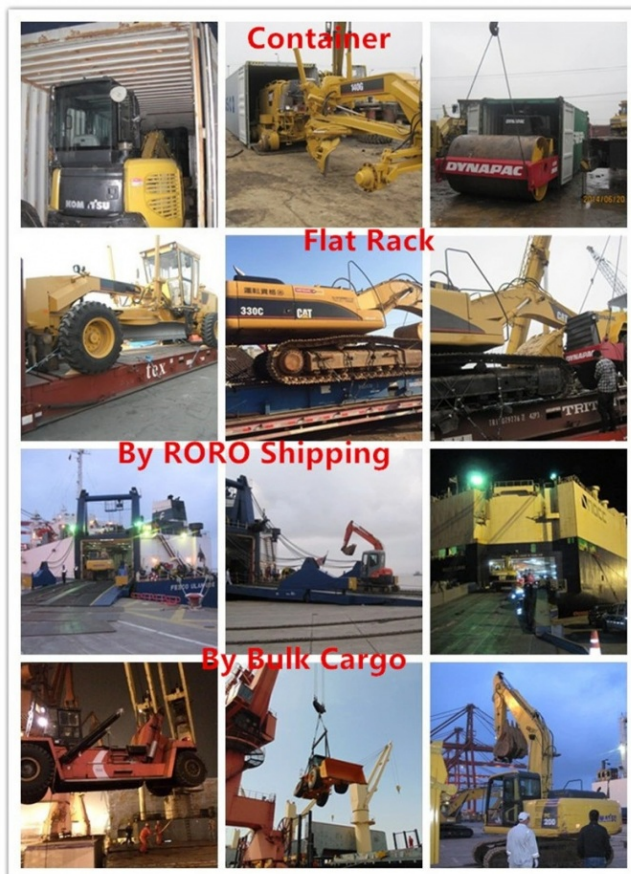
Our Product Introduction

For more products please visit us on usedexcavator-equipment.com



Contact us for a full picture and video of this machine!





Our Service:



FAQ:

1. How long is the warranty period of small excavators?

A: One year 12 Month or 1200 working hours.

2. What kind of small excavator certifications do you have?

A: CE, ISO9001, SGS, etc.

3. Is it convenient to visit your factory? How to go there?

A: Warmly welcome to visit our factory. It locates in Shanghai City and Hefei City, Anhui Province, China. By taking high-speed railway or plane are both ok. When you arrive, we will pick you up.

4. What are your advantages over others?

- A. 1. Over 20 years experience in the strong manufacturing capacity;
2. Own private brand, Shanding brand occupies 1st market share in China's domestic mini excavator market;
3. Strict quality control and service system. ISO9001, R & D and after-sales service team, 24/7 quick response;
4. Over 20 models ranging from 2000kg to 45ton, crawler/ wheel type .the engines have the Euro stage V, and EPA certification

5. MOQ?

minimum order quantity of 1 set, We can provide customized service Bigger order, price will be more favorable.

6. What is your terms of payment?

A: T/T, L/C at sight, Trade Assurance on Alibaba etc.

7. How long will the offer be valid?

Basically, our prices remain stable throughout the year. Mightly adjust the price due to 2 changes: exchange rate & raw material and labor cost.

8. How about the delivery time?

1. Conventional products: 5-7 working days after payment received.
 2. Customized products: 10-30 days according to detailed request.
- Any more infos, pls feel free to let us know at any time.

