



Used SY235 Sany Hydraulic Excavator Crawler Mounted Second Hand

Our Product Introduction

for more products please visit us on usedexcavator-equipment.com

Basic Information

- Place of Origin: China
- Brand Name: SANY
- Certification: CE/EPA/ISO9001
- Model Number: SY235
- Minimum Order Quantity: 1 Set
- Price: 20000-32000 USD per Set
- Packaging Details: For sea transport, 20 size frame cabinet is recommended
- Delivery Time: 14-21 workdays
- Payment Terms: T/T
- Supply Ability: 20 set per month

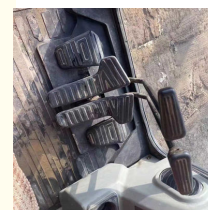
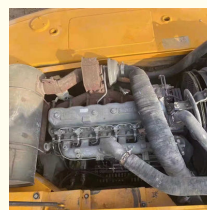
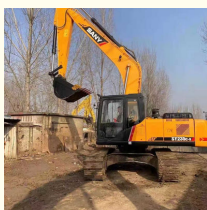
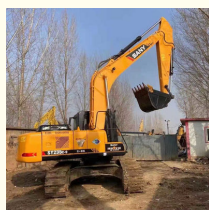


Product Specification

- Bucket Capacity: 1.2 M3
- Condition: Second Hand
- Hours: 0-2000
- Location: China
- Manufacturer: SANY
- Model: Hydraulic Excavator Crawler Mounted
- Year: 2020
- Color: Original Paint
- Type: Hydraulic Excavator
- Highlight: Used Hydraulic Excavator Crawler Mounted, Hydraulic Excavator Crawler Mounted, SY235 Sany Hydraulic Excavator



More Images



Product Description

Second Hand Hydraulic Excavator Used Excavator Sany Sy 235 with Good Condition

Production Detail

- 1) Stable working hours and high working efficiency;
- 2) Strong working power and stability;
- 3) Complete accessory and no oil leaking;
- 4) Competitive price and good skills;

Our Product Introduction



For more products please visit us on usedexcavator-equipment.com



Contact us for a full picture and video of this machine!

FAQ:

1. How long is the warranty period of small excavators?

A: One year 12 Month or 1200 working hours.

2. What kind of small excavator certifications do you have?

A: CE, ISO9001, SGS, etc.

3. Is it convenient to visit your factory? How to go there?

A: Warmly welcome to visit our factory. It locates in Shanghai City and Hefei City, Anhui Province, China. By taking high-speed railway or plane are both ok. When you arrive, we will pick you up.

4. What are your advantages over others?

- A. 1.Over 20 years experience in the strong manufacturing capacity;
- 2.Own private brand, Shanding brand occupies 1st market share in China's domestic mini excavator market;
- 3.Strict quality control and service system. ISO9001, R & D and after-sales service team, 24/7 quick response;
- 4.Over 20 models ranging from 2000kg to 45ton, crawler/ wheel type .the engines have the Euro stage V,and EPA certification

5.MOQ?

minimum order quantity of 1 set,We can provide customized service Bigger order, price will be more favorable.

6.What is your terms of payment?

A: T/T, L/C at sight, Trade Assurance on Alibaba etc.

7. How long will the offer be valid?

Basically, our prices remain stable throughout the year. Mightly adjust the price due to 2 changes: exchange rate & raw material and labor cost.

8.How about the delivery time?

- 1.Conventional products: 5-7working days after payment received.
 - 2.Customized products: 10-30 days according to detailed request.
- Any more infos, pls feel free to let us know at any time.

 **Hefei Gangniu Machinery Equipment Co., Ltd**

 +86 19314055186  Flora@ahgnjx.com  usedexcavator-equipment.com

Room 707, Huifeng Plaza, North First Ring Road, Hefei City, Anhui Province