



## Backhoe Used Crawler Excavator Sy215c Hydraulic 20t Excavator

Our Product Introduction

### Basic Information

- Place of Origin: China
- Brand Name: Sany
- Certification: CE, ISO9001: 2000
- Model Number: Sany SY215C
- Minimum Order Quantity: 1 set
- Delivery Time: 15 work days after deposit
- Payment Terms: T/T
- Supply Ability: 100 units per month



### Product Specification

- Type: Crawler Excavator
- Size: Medium-Sized
- Bucket: Backhoe
- Bucket Capacity: 1.0~1.5m<sup>3</sup>
- Transmission: Hydraulic Transmission
- Usage: Special Excavator, Marine Excavator, Mining Excavator, GM Excavator
- Highlight: **Backhoe Used Crawler Excavator, Used Crawler Excavator Sy215c, Hydraulic 20t Excavator**

for more products please visit us on [usedexcavator-equipment.com](http://usedexcavator-equipment.com)

## Product Description

### Used Sy215c Excavator 20t Hydraulic And Crawler Excavator Mining Equipments

#### Product Description

Sany SY215C excavator is a medium-sized hydraulic excavator, known as the "King of Earthwork". Its most prominent selling points include:

- High efficiency and low energy consumption: Reliable operation and stable work are ensured by high-quality components.
- New power system: Equipped with Sany Fusang 4M50 engine with a rated power of 118kW, it has strong torque and durability.
- Advanced hydraulic technology: It uses Kawasaki fully electronically controlled main valve and pump, achieves boom regeneration and fast return oil, and precisely controls the valve core, improving the excavation efficiency and maneuverability of the whole machine.
- Humanized design: Scientific and user-friendly design makes the operator's work more comfortable and the equipment maintenance more convenient.
- Energy saving and environmental protection: It uses an environmentally friendly engine that meets the national three emission standards, and adopts the original AOCT self-optimizing control technology, optimizes the hydraulic valve core, increases the displacement of the main pump, achieving excellent fuel economy, which can save energy by 15% compared with previous models under the same efficiency.

These features have earned SY215C a good reputation in the market and made it an indispensable equipment in construction projects.

#### Basic Info.

Model NO.	SY215C
Drive Type	Internal Combustion Drive
Bucket Capacity	1.0~1.5m <sup>3</sup>
Size	Medium-Sized
Certification	CE, ISO9001: 2000
Condition	Used
Location	China
Performance	Excellent
Year	2022
Working Hours	500
Transport Package	Flat Rack or Container
Specification	21 ton
Trademark	SANY
Origin	China
HS Code	84295900
Production Capacity	50

#### Detail photos





**[Contact us for a full picture and video of this machine!](#)**







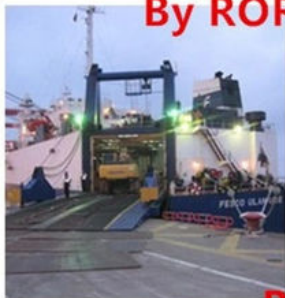
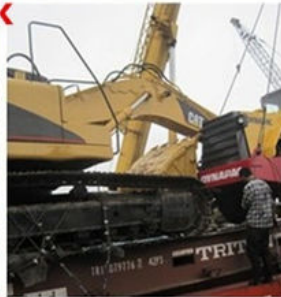




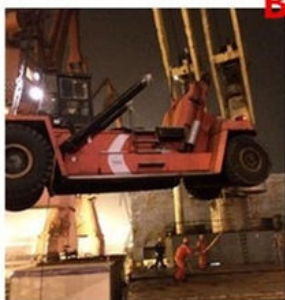
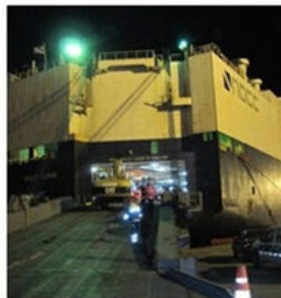
**Container**



**Flat Rack**



**By RORO Shipping**



**By Bulk Cargo**



## OTHER PARTS THAT CAN BE SUPPLY

Contact customer service for more assistive devices.



Hydraulic Pump



Engine



Control Valve



Hydraulic system



Auger



Rake



Bucket



Quick Hitch



Grapple



Ripper



Shell Hopper



Breaker



## FAQ

### 1. Why can we trust you?

Our company has focused on top quality used construction machines and parts for over 20 years in China. We started as a small construction machinery shop, but now we have become one of leading suppliers in the used construction machines in China.

### 2. What's your payment term?

Our payment term is T/T, Cash, Western Union.

### 3. Do you guarantee quality of machines you sold.

We have a very strict control on machine quality, all machines must be tested strictly to avoid any mechanical problem before sales. What's more, we guarantee quality for one year after sales.

### 4. Can you ship worldwide?

We are very experienced in shipment of heavy machinery, so just tell us your destination port, we will take care of everything from door to door.

 **Hefei Gangniu Machinery Equipment Co., Ltd**

 +86 19314055186

 [Flora@ahgnjx.com](mailto:Flora@ahgnjx.com)

 [usedexcavator-equipment.com](http://usedexcavator-equipment.com)

Room 707, Huifeng Plaza, North First Ring Road, Hefei City, Anhui Province