



Used Mini Crawler Excavator Komatsu PC70 PC78 PC200 PC220 PC300 PC400 PC450 Nice Price

Our Product Introduction

Basic Information

- Place of Origin: Japan
- Brand Name: Komatsu
- Certification: CE, ISO9001: 2000
- Model Number: KOMATSU PC70-8
- Minimum Order Quantity: 1 set
- Delivery Time: 15 work days after deposit
- Payment Terms: T/T
- Supply Ability: 100 units per month



Product Specification

- Model NO.: KOMATSU PC70-8
- Rated Power: 48.5/2200 Kw/Rpm
- Bucket Capacity: 0.32~0.39m³
- Color: Origin
- Operating Weight: 7000kg
- Machine Weight: 7ton
- Engine Brand: Hino
- Drive Type: Internal Combustion Drive
- Highlight: **PC200 Used Mini Excavator,
Used Mini Crawler Excavator,
Used Komatsu PC70 Excavator**

for more products please visit us on usedexcavator-equipment.com

Product Description

Used Komatsu Excavator PC70-8 7 Ton Mini Crawler Excavator China Used Excavator

Product Description

The Komatsu PC70-8 is a robust and eco-conscious excavator produced by Komatsu. It is built with an efficient, environmentally friendly SAA4D95LE turbocharged engine that not only delivers impressive fuel economy but also features automated speed reduction for added savings. Weighing in at 6500kg and boasting a rated power of 48.5PS (kW), this machine has a bucket capacity ranging from 0.32 to 0.39 cubic meters and can travel at maximum speeds of 4.5km/h on the road and 2.8km/h off-road. The PC70-8 also provides exceptional digging power with a maximum bucket capacity of 5590Kg and strong arm force. Its combination of power, fuel efficiency, and adaptable operation modes has earned the Komatsu PC70-8 high marks, making it an excellent choice for a wide range of excavation tasks.

Basic Info.

| | |
|-------------------------------------|---------------------------|
| Model NO. | Komatsu PC70-8 |
| Drive Type | Internal Combustion Drive |
| Bucket Capacity | 0.1~0.5m ³ |
| Size | Small-Scale |
| Certification | CE, ISO9001: 2000 |
| Condition | Used |
| Rated Power | 48.5/2200 Kw/Rpm |
| Working Weight of The Whole Machine | 6500 Kg |
| Year | 2020 |
| Working Hours | 1300hours |
| Engine Model | Mitsubishi 4m40tl |
| Fuel Tank | 135 L |
| Maximum Digging Depth | 4070 mm |
| Transport Package | Container |
| Specification | 7 tons |
| Trademark | Komatsu |
| Origin | Japan |
| HS Code | 84295900 |

Detail photos





Contact us for a full picture and video of this machine!

» COMPANY PROFILE



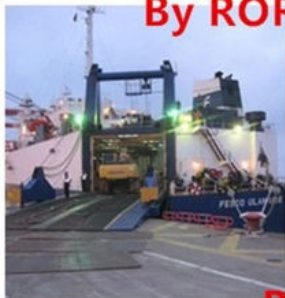
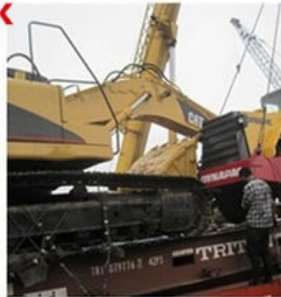




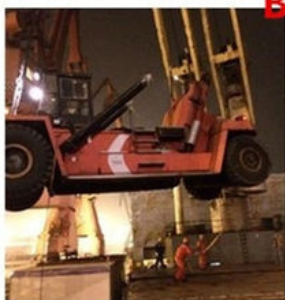
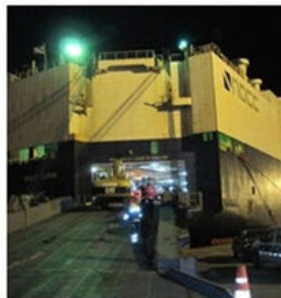
Container



Flat Rack



By RORO Shipping



By Bulk Cargo



OTHER PARTS THAT CAN BE SUPPLY

Contact customer service for more assistive devices.



Hydraulic Pump



Engine



Control Valve



Hydraulic system



Auger



Rake



Bucket



Quick Hitch



Grapple



Ripper



Shell Hopper



Breaker



FAQ

1. Why can we trust you?

Our company has focused on top quality used construction machines and parts for over 20 years in China. We started as a small construction machinery shop, but now we have become one of leading suppliers in the used construction machines in China.

2. What's your payment term?

Our payment term is T/T, Cash, Western Union.

3. Do you guarantee quality of machines you sold.

We have a very strict control on machine quality, all machines must be tested strictly to avoid any mechanical problem before sales. What's more, we guarantee quality for one year after sales.

4. Can you ship worldwide?

We are very experienced in shipment of heavy machinery, so just tell us your destination port, we will take care of everything from door to door.

 **Hefei Gangniu Machinery Equipment Co., Ltd**

 +86 19314055186

 Flora@ahgnjx.com

 usedexcavator-equipment.com

Room 707, Huifeng Plaza, North First Ring Road, Hefei City, Anhui Province