



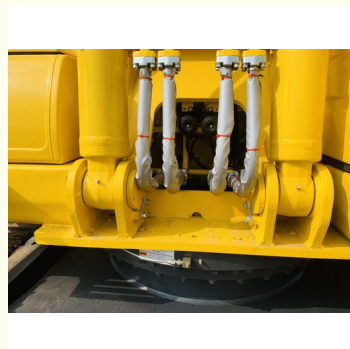
2019 Model Year Used Excavator Komatsu PC220 Low Work Hour Good Condition For Sale

Our Product Introduction

for more products please visit us on usedexcavator-equipment.com

Basic Information

- Place of Origin: Japan
- Brand Name: Komatsu
- Certification: CE/EPA/ISO9001
- Model Number: PC220
- Minimum Order Quantity: The minimum order quantity is one unit
- Price: 22000-26000 USD per Set
- Delivery Time: 14-21 workdays
- Payment Terms: T/T, Western Union
- Supply Ability: 10set per week



Product Specification

- Location: Hefei, China
- Climbing Capacity: 100%
- Engine Brand: SAA4D102E-2
- Engine Type: Water Cooling, Direct Injection
- Mode: PC220-8
- Working Weight: 22000kg
- Warranty: 1 Year
- Hydraulic System: 110L
- Max Loading Height: 8145mm
- Product Working Mass: 32600kg
- Engine Model: SAA6D125E-5
- Operating Weight: 19.5 Tons
- Dimensions: 7599*2600*2700mm
- Ground Pressure: 30.3 Kpa
- Highlight: **Komatsu PC220 Used Excavator.**

Product Description

Basic Info.

Drive Type	Electric Drive
Bucket Capacity	>1.5m ³
Size	Large-Scale

Product Description

If the machine interests you, please send an inquiry

Our Product

Certification	CE, ISO9001: 2000
Condition	Used
Paint	Original
Engine	Cat C6.4
Pwoer	178kw
Year	2018-2022
Work Hour	500-2000
Transport Package	Sea Transport
Specification	Mini Excavator
Trademark	Cartpilliar
Origin	Japan
HS Code	84295200
Production Capacity	20 Set/Month

and I will provide you with more pictures and videos!

The machines we can Aslo provide:

KOMATSU :	PC60-7/PC60-8/PC120-6/PC130-7PC200-5/PC200-6/PC200-7/PC200-8/PC210-7/PC220-6/PC220-7/PC220-8/PC240-8/PC300-7/PC350-7/PC360-7/PC400-7/PC450-7
CAT:	E70B,E120B,E200B, 320B, 320BL,320C, 320D,320D2,320DL, 325B 325C 325D 330B 330D 336D
VOLVO:	EC180BLC/EC210BLC/EC240BLC/EC290BLC/EC360BLC/EC460BLC
HYUNDAI:	215LC-7/225LC-7/215LC-9/225LC-9
DOOSAN:	DH60-7/DH200LC-7/DH225LC-9/DH300LC-7/DH150W-7
HITACHI:	313D/315D/325B/325C/325D/329D/320B/320C/320D/330B/330C/336D/345D.
<i>And Other Models,Please send a message I will reply you as soon as possible</i>	

Company Profile

Steel Cattle Machinery Equipment Co., Ltd. is a leading complet solution provider in Anhui, China, focusing on construction mach heavy industrial equipment and vehicles. We are always commit providing customers with high quality, reliable performance, price concessions, good service products, to ensure that every project and on schedule. With more than 20 years of experience in the industry and strict implementation of ISO 9001:2008 standards, Steel Cattle has established and maintained good business relationship with general contractors, civil engineering companies and construction companies all over the world. Our previous projects as a complete equipment supplier include airport projects in Africa, power plant the Middle East, dredging projects in South America, road project Oceania, rural and municipal road projects in Southeast Asia, ar still undertaking more and more projects.

High Power Used Excavator Cat 320 Cat 320d2 Cat 320d2l Excavator Low Hours for Sale Used Excavator Cat 336 Cat 330 Cat 320

High Power Used Excavator Cat 320 Cat 320d2 Cat 320d2l Excavator Low Hours for Sale Used Excavator Cat 336 Cat 330 Cat 320

High Power Used Excavator Cat 320 Cat 320d2 Cat 320d2l Excavator Low Hours for Sale Used Excavator Cat 336 Cat 330 Cat 320

FAQ

1. How long is the warranty period of small excavators?

A: One year 12 Month or 1200 working hours.

2. What kind of small excavator certifications do you have?

A: CE, ISO9001, SGS, etc.

3. Is it convenient to visit your factory? How to go there?

A: Warmly welcome to visit our factory. It locates in Shanghai City and Hefei City, Anhui Province, China. By taking high-speed railway or plane are both ok. When you arrive, we will pick you up.

4. What are your advantages over others?

- A. 1.Over 20 years experience in the strong manufacturing capacity;
- 2.Own private brand, Shanding brand occupies 1st market share in China's domestic mini excavator market;
- 3.Strict quality control and service system. ISO9001, R & D and after-sales service team, 24/7 quick response;
- 4.Over 20 models ranging from 2000kg to 45ton, crawler/ wheel type .the engines have the Euro stage V,and EPA certification

5.MOQ?

minimum order quantity of 1 set,We can provide customized service Bigger order, price will be more favorable.

6.What is your terms of payment?

A: T/T, L/C at sight, Trade Assurance on Alibaba etc.

7. How long will the offer be valid?

Basically, our prices remain stable throughout the year. Mightly adjust the price due to 2 changes: exchange rate & raw material and labor cost.

8.How about the delivery time?

1.Conventional products: 5-7working days after payment received.

2.Customized products: 10-30 days according to detailed request.

Any more infos, pls feel free to let us know at any time.



Hefei Gangniu Machinery Equipment Co., Ltd



+86 19314055186



Flora@ahgnjx.com



usedexcavator-equipment.com

Room 707, Huifeng Plaza, North First Ring Road, Hefei City, Anhui Province